

# User guide

Please read the **Important information** before you use your mobile phone.

## Experience more. Discover how.

Fill it with pop and let it rock. Share your life in pictures. Or why not go online for the latest updates? Your new phone is the key to a wider world. And it's just around the corner. Get started with this User guide. And join us online to get the full picture. Music, games, apps, updates, downloads, support and more. All in one place: [www.sonyericsson.com/Yari](http://www.sonyericsson.com/Yari) [www.sonyericsson.com/Aino](http://www.sonyericsson.com/Aino)

**Don't forget** to update your phone software. See *Updating your phone* on page 28.

### User guide in the phone

An extended User guide is available in your phone.

To access the **User guide in your phone**

- Select **Menu** > **Settings** > **User help** > **User guide**.

### Getting started

#### Assembly

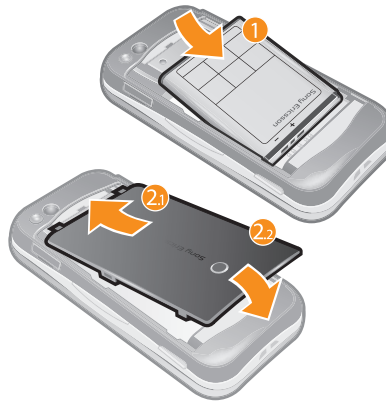
Before you start using your phone, you need to insert a SIM card and the battery.

To insert the SIM card



- 1 Remove the battery cover.
- 2 Slide the SIM card into its holder with the gold-coloured contacts facing down.

To insert the battery

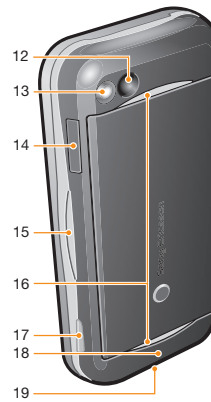


- 1 Insert the battery with the label side up and the connectors facing each other.
- 2 Attach the battery cover.

### Phone overview



- 12 Main camera
- 13 Flash light
- 14 Memory card slot
- 15 Volume, digital zoom key
- 16 Stereo speakers
- 17 Camera key
- 18 Antenna
- 19 Strap hole



### Turning on the phone

To turn on the phone



- 1 Press and hold down **(P)**.
  - 2 Enter your SIM card PIN (Personal Identification Number), if requested, and select **OK**.
  - 3 Select a language.
  - 4 Follow the instructions that appear.
- If you want to correct a mistake when you enter your PIN, press **(C)**.

### More information

In addition to this User guide, Feature guides and more information are available at [www.sonyericsson.com/support](http://www.sonyericsson.com/support).

# Yari™ phone

### To view tips and tricks

- Select **Menu** > **Settings** > **User help** > **Tips and tricks**.

### To view information about functions

- Scroll to a function and select **Info**, if available. In some cases, **Info** appears under **Options**.

### To view the phone status

- Press the volume key. Phone, memory and battery information is shown.

### Supported services and features

- Some of the services and features described in this User guide are not supported by all networks and/or service providers in all areas. Without limitation, this applies to the GSM International Emergency Number 112. Please contact your network operator or service provider to determine availability of any specific service or feature and whether additional access or usage fees apply.

### Charging the battery

The phone battery is partly charged when you buy it.

### To charge the battery



- 1 Connect the charger to the phone.
- 2 Remove the charger by tilting the plug upwards.

### Maximising battery performance

- Charge your phone often. The battery lasts longer if you charge it frequently.
- If you are in an area with no coverage, your phone repeatedly scans for available networks. This consumes power. If you cannot move to an area with better coverage, turn off your phone temporarily.
- Turn off 3G, Bluetooth™ wireless technology and Wi-Fi™ when you do not need these functions.
- Do not cover the phone antenna when you are engaged in a call.

### Navigation

#### To access the main menu

- When **Menu** appears on the screen, press the centre selection key to select **Menu**.
- If **Menu** does not appear on the screen, press **(M)** and then press the centre selection key to select **Menu**.

#### To navigate the phone menus



- Press the navigation key upwards, downwards, left or right to move through the menus.

#### To end a function

- Press **(E)**.

#### To return to standby

- Press **(M)**.

### To delete items

- Press **(C)** to delete items such as numbers, letters, pictures and sounds.

### Shortcuts

You can use the navigation key shortcuts to go directly to functions from standby.

#### To use navigation key shortcuts

- Press the navigation key upwards, downwards, left or right, to go directly to a function.

#### To edit a navigation key shortcut

- 1 Select **Menu** > **Settings** > **General** > **Shortcuts**.
- 2 Scroll to an option and select **Edit**.
- 3 Scroll to a menu option and select **Shortc...**

### Activity menu

The activity menu gives you quick access to:

- **New events** – missed calls and new messages.
- **Running apps** – applications that are running in the background.
- **My shortcuts** – add your favourite functions to access them quickly.
- **Internet** – connect conveniently to the Internet.

#### To open the activity menu

- Press **(E)**.

### Memory card

- You may have to purchase a memory card separately.

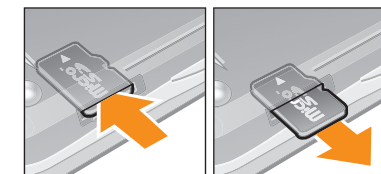
Your phone supports a microSD™ memory card adding more storage space to your phone. It can also be used as a portable memory card with other compatible devices. You can move content between a memory card and the phone memory.

### To insert a memory card



- Open the cover and insert a memory card with the gold-coloured contacts facing down.

### To remove a memory card



- Open the cover and press the edge of the memory card to release and remove it.

### Entering text

You can use multitap text input or Quick text input to enter text. The Quick text input method uses a dictionary application in your phone.

#### To change the writing language

- When you enter text, press and hold down **(L+)** to change to Quick text input.

#### To change the text input method

- When you enter text, press and hold down **(\*)**.

#### To shift between upper- and lower-case letters or numbers

- When you enter text, press **(L+)**.

#### To enter numbers

- 1 When you enter text, press **(L+)** until **[#]** appears at the top of the screen.

### To enter a number from text input mode, you can press and hold down

- **(L+)** to enter a number from text input mode, you can press and hold down **(L+)** – **(9)**.

### To enter punctuation marks and symbols

- 1 When you enter text, press **(\*)** briefly.
- 2 Scroll to a symbol and select **Insert**.

- To select from the most commonly used punctuation marks, you can also press **(L)**.

### To enter text using Quick text input

- 1 Select, for example, **Menu** > **Messaging** > **Write new** > **Message**.

- 2 If **[#]** is not displayed, press and hold down **(\*)** to change to Quick text input.

- 3 Press each key only once, even if the letter you want is not the first letter on the key. For example, to write the word "Jane", press **(5)**, **(2)**, **(6)**, **(3)**. Write the whole word before looking at the suggestions.

- 4 To view word suggestions, press **(\*)** or press the navigation key downwards.

- 5 Press **(L)** to accept a suggestion and add a space.

### To enter text using the multitap method

- 1 Select, for example, **Menu** > **Messaging** > **Write new** > **Message**.

- 2 If **[#]** is displayed, press and hold down **(\*)** to change to multitap text input.

- 3 Press **(2)** – **(9)** repeatedly until the desired letter appears.

- 4 Press **(L)** to add a space.

### To add words to the phone dictionary

- 1 When you enter text using Quick text input, select **Options** > **Spell word**.
- 2 Write the word using multitap input and select **Save**.

## Calling

You need to turn on your phone and be within range of a network.

### Making and answering calls

#### To make a call

- 1 Enter a phone number (with international country code and area code, if applicable).
- 2 Press **(M)**.

- You can call numbers from your contacts and call list.

#### To end a call

- Press **(M)**.

#### To make international calls

- 1 Press and hold down **(\*)** until a "+" sign appears.
- 2 Enter the country code, area code (without the first zero) and phone number.
- 3 Press **(M)**.

#### To answer a call

- Press **(M)**.

#### To reject a call

- Press **(M)**.

### To change the ear speaker volume during a call

- Press the volume key up or down.

### To mute the microphone during a call

- 1 Press and hold down **(M)**, **[M]** appears.
- 2 Press and hold down **(M)** again to resume.

### To turn on the loudspeaker during a call

- Select **Spkr on**, **[L]** appears.

- Do not hold the phone to your ear when using the loudspeaker. This could damage your hearing.

### Emergency calls

Your phone supports international emergency numbers, for example, 112 or 911. You can normally use these numbers to make emergency calls in any country, with or without the SIM card inserted, if you are within range of a network.

- In some countries, other emergency numbers may also be promoted. Your network operator may therefore have saved additional local emergency numbers on the SIM card.

### To make an emergency call

- Enter 112 (the international emergency number) and press **(M)**.

### To view your local emergency numbers

- 1 Select **Menu** > **Contacts**.
- 2 Scroll to **New contact** and select **Options** > **Special numbers** > **Emergency numbers**.

### Call list

You can view information about answered **[A]**, dialled **[D]** and missed or rejected **[R]** calls.

### To call a number from the call list

- 1 Press **(M)** and scroll to a tab.
- 2 Scroll to a name or a number and press **(M)**.

### Contacts

You can save names, phone numbers and personal information in **Contacts**. Information can be saved in the phone memory or on the SIM card.

- You can synchronise your contacts using the **Sony Ericsson PC Suite**.

### To add a phone contact

- 1 Select **Menu** > **Contacts**.
- 2 Scroll to **New contact** and select **Add**.
- 3 Enter the name and select **OK**.
- 4 Scroll to **New number** and select **Add**.
- 5 Enter the number and select **OK**.
- 6 Select a number option.
- 7 Scroll between the tabs and add information to the fields.
- 8 Select **Save**.

### Calling contacts

#### To call with Smart search

- 1 Press **(M)** – **(M)** to enter a sequence of (at least two) digits. All entries which match the sequence of digits or corresponding letters are shown in a list.
- 2 Scroll to a contact or a phone number and press **(M)**.

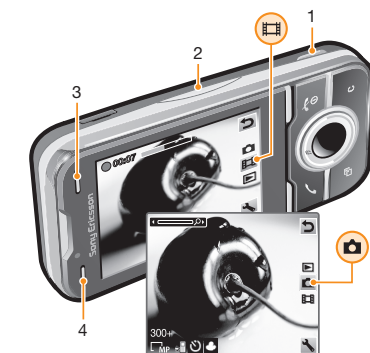
#### To turn on or off Smart search

- 1 Select **Menu** > **Settings** > **Calls** > **Smart search**.
- 2 Select an option.

## Imaging

You can take photos and record videos to view, save or send. You can find saved photos and videos in **Media** and in **File manager**.

### Viewfinder and camera keys



- 1 Activate the camera/Take photos/Record video

2	Zoom in or out
3	Still: <b>Flash Video: Light</b>
4	Still: <b>Scenes Video: Night mode</b>

### To activate the camera

- From standby press and hold down **(M)**.

### Using the still camera

#### To take a photo

- 1 Activate the camera and press the navigation key to scroll to **[M]**.
- 2 Press **(M)** halfway down to use auto focus. **[M]** fully down to take a photo. The photo is automatically saved.
- 3 When the dot and focus frame are green, press **(M)** fully down to take a photo. The photo is automatically saved.
- 4 To take another photo, press **(M)** to return to the viewfinder.

#### To use zoom

- Press the volume key.

#### To adjust brightness

- Press the navigation key. The amount of brightness is shown beside the **[L]**.

### Using the video camera

#### To record a video clip

- 1 Activate the camera and press the navigation key to scroll to **[M]**.
- 2 Press **(M)** fully down to start recording.

- 3 To stop recording, press **(M)** fully down. The video clip is automatically saved.

### Working with photos

You can view, enhance and organise photos and videos on your computer by installing the **Adobe™ Photoshop™ Album Starter Edition**. It is available for download at [www.sonyericsson.com/support](http://www.sonyericsson.com/support). Use the **Media Go™** application to transfer content to and from your phone.

### Using photos

You can add a photo to a contact, use the photo during phone startup, as a wallpaper in standby, or as a screen saver.

#### To use photos

- 1 Select **Menu** > **Media** > **Photo** > **Camera album**.
- 2 Select a month.
- 3 Scroll to a photo and select **View**.
- 4 Select **Options** > **Use as**.
- 5 Select an option.

### Video player

#### To play videos

- 1 Select **Menu** > **Media** > **Video** > **Videos**.
- 2 Scroll to a title and select **Play**.

## Music

You can listen to music, audio books and podcasts. Use the **Media Go™** application to transfer content to and from

your phone. For more information, see *Transferring content to and from a computer* on page 27.

### Stereo portable handsfree



### Music player

#### To play music

- 1 Select **Menu** > **Media** > **Music**.
- 2 Browse by category using the navigation key.
- 3 Scroll to a title and select **Play**.

To stop playing music.

- Press the centre selection key.

To fast forward and rewind

- Press and hold down the navigation key right or left.

To move between tracks

- Press the navigation key right or left.

To change the volume

- Press the volume key up or down.

## PlayNow™

When you select **PlayNow™** you enter PlayNow™ arena, where you can download music, games, ringtones, themes and wallpapers. You can preview or listen to content before you purchase and download it to your phone. If you cannot use PlayNow™ and PlayNow™ arena, see *I cannot use Internet-based services* on page 34.

- This service is not available in all countries.

For extended functionality, you can also access the PlayNow™ arena Web shop on a computer from [www.playnow-arena.com](http://www.playnow-arena.com). For more information, go to [www.sonyericsson.com/support](http://www.sonyericsson.com/support) to read the PlayNow™ arena Feature guide.

To use PlayNow™

- Select **Menu** > **PlayNow™**.
- Scroll through PlayNow™ arena and follow the instructions to preview and purchase content.

spaces if no other items are added to the message. If you enter more than 160 characters, a second message is created. Your messages are sent as one concatenated message.

To create and send a message

- Select **Menu** > **Messaging** > **Write new** > **Message**.
- Enter text. To add items to the message, press the navigation key downwards, scroll by pressing the navigation key left or right, and select an item.
- Select **Continue** > **Contacts look-up**.
- Select a recipient and select **Send**.

- If you send a message to a group, you may be charged for each member. Contact your service provider for details.

spaces if no other items are added to the message. If you enter more than 160 characters, a second message is created. Your messages are sent as one concatenated message.

To create and send a message

- Select **Menu** > **Messaging** > **Write new** > **Message**.
- Enter text. To add items to the message, press the navigation key downwards, scroll by pressing the navigation key left or right, and select an item.
- Select **Continue** > **Contacts look-up**.
- Select a recipient and select **Send**.

- If you send a message to a group, you may be charged for each member. Contact your service provider for details.



## Internet

If you cannot use the Internet, see *I cannot use Internet-based services* on page 34.

To start browsing

- Select **Search**.
- Enter a web address, a search phrase or the name of a bookmark.
- Scroll to an item in the list and select **Go to** or **Search**.

To exit the browser

- When you are browsing the web, select  and then select .
- Select **Exit browser**.

Feature guides which contain detailed installation instructions and troubleshooting sections.

## Error messages

### Insert SIM

There is no SIM card in your phone or you may have inserted it incorrectly.

See *To insert the SIM card* on page 3.

The SIM card connectors need cleaning. If the card is damaged, contact your network operator.

### Insert correct SIM card

Your phone is set to work only with certain SIM cards. Check if you are using the correct operator SIM card.

### Incorrect PIN/Incorrect PIN2

You have entered your PIN or PIN2 incorrectly.

Enter the correct PIN or PIN2 and select **OK**.

### PIN blocked/PIN2 blocked

You have entered your PIN or PIN2 code incorrectly three times in a row.

To unblock, see *SIM protection* on page 32.

### No netw. coverage

- Your phone is in flight mode. See *Flight mode* on page 30.
- Your phone is not receiving any network signal, or the received signal is too weak. Contact your network operator and make sure that the network has coverage where you are.
- The SIM card is not working properly. Insert your SIM card in another phone. If this works, it is probably your phone that is causing the problem. Please contact the nearest Sony Ericsson service location.

## TrackID™

TrackID™ is a music recognition service. You can search for title, artist and album name for a track you hear playing through a loudspeaker or on the radio in your phone. If you cannot use TrackID™, see *I cannot use Internet-based services* on page 34.

To search for track information

- When you hear a track through a loudspeaker, select **Menu** > **Entertainment** > **TrackID™** > **Start**.
- When the radio in your phone is playing select **Options** > **TrackID™**.

- For best results, use TrackID™ in a quiet area.

## Radio

- Do not use your phone as a radio in places where this is prohibited.

To turn on the radio

- Connect a handsfree to the phone.
- Select **Menu** > **Entertainment** > **Radio**.

## Saving channels

You can save up to 20 preset channels.

To save channels automatically

- Select **Options** > **Channels** > **Auto save**.

To switch between saved channels

- Press the navigation key upwards or downwards.

- You can also select a saved channel by pressing  > .

## More features

spaces if no other items are added to the message. If you enter more than 160 characters, a second message is created. Your messages are sent as one concatenated message.

spaces if no other items are added to the message. If you enter more than 160 characters, a second message is created. Your messages are sent as one concatenated message.

spaces if no other items are added to the message. If you enter more than 160 characters, a second message is created. Your messages are sent as one concatenated message.

## Flight mode


In **Flight mode** the network and radio transceivers are turned off to prevent disturbance to sensitive equipment. When the flight mode menu is activated you are asked to select a mode the next time you turn on your phone:

- Normal mode** – full functionality
- Flight mode** – limited functionality

To activate the flight mode menu

- Select **Menu** > **Settings** > **General** > **Flight mode** > **Continue** > **Show at startup**.

To select flight mode

- When the flight mode menu is activated, turn off your phone.
- Turn on your phone and select **Flight mode**.  appears.

## Alarms

You can set a sound or the radio as an alarm signal. The alarm sounds even if the phone is turned off. When the alarm sounds you can silence it or turn it off.

To set the alarm

- Select **Menu** > **Organiser** > **Alarms**.
- Scroll to an alarm and select **Edit**.
- Scroll to **Timer**, and select **Edit**.
- Enter a time and select **OK** > **Save**.

To silence the alarm

- When the alarm sounds, press any key.

Feature guides which contain detailed installation instructions and troubleshooting sections.

spaces if no other items are added to the message. If you enter more than 160 characters, a second message is created. Your messages are sent as one concatenated message.

spaces if no other items are added to the message. If you enter more than 160 characters, a second message is created. Your messages are sent as one concatenated message.

spaces if no other items are added to the message. If you enter more than 160 characters, a second message is created. Your messages are sent as one concatenated message.

spaces if no other items are added to the message. If you enter more than 160 characters, a second message is created. Your messages are sent as one concatenated message.

## Emergency calls only

You are within range of a network, but you are not allowed to use it. However, in an emergency, some network operators allow you to call the international emergency number 112. See *Emergency calls* on page 16.

## Legal information

### Sony Ericsson Yari™ phone U100i/U100a

This User guide is published by Sony Ericsson Mobile Communications AB or its local affiliated company, without any warranty. Improvements and changes to this User guide necessitated by typographical errors, inaccuracies of current information, or improvements to programs and/or equipment, may be made by Sony Ericsson Mobile Communications AB at any time and without notice. Such changes will, however, be incorporated into new editions of this User guide. All rights reserved.


©Sony Ericsson Mobile Communications AB, 2009

Publication number: xxx-xxxx.1  
Your mobile phone has the capability to download, store and forward additional content, e.g. ringtones. The use of such content may be restricted or prohibited by rights of third parties, including but not limited to restriction under applicable copyright laws. You, and not Sony Ericsson, are entirely responsible for additional content that you download to or forward from your mobile phone. Prior to your use of any additional content, please verify that your intended use is properly licensed or is otherwise authorized. Sony Ericsson does not guarantee the accuracy, integrity or quality of any additional content or any other third party content. Under no circumstances will Sony Ericsson be liable in any way for your improper use of additional content or other third party content.  
Bluetooth is a trademark or a registered trademark of Bluetooth SIG Inc. and any use of such mark by Sony Ericsson is under license.

Feature guides which contain detailed installation instructions and troubleshooting sections.

## Transferring and handling content

You can transfer and handle content such as pictures and music.

- You are not allowed to exchange some copyright-protected material.  identifies a protected item.

## Handling content in the phone

You can use **File manager** in your phone, to handle content saved in the phone memory or on a memory card. Tabs and icons in **File manager** show where the content is saved. If the memory is full, delete some content to create space.

To select more than one item in a folder

- Select **Menu** > **Organiser** > **File manager**.
- Scroll to a folder and select **Open**.
- Select **Options** > **Mark** > **Mark several**.
- For each item you want to mark, scroll to the item and select **Mark**.

To move items between the phone memory and the memory card

- Select **Menu** > **Organiser** > **File manager**.
- Find an item and select **Options** > **Manage file** > **Move**.
- Select **Memory card** or **Phone**.
- Scroll to a folder and select **Open**.
- Select **Paste**.

Feature guides which contain detailed installation instructions and troubleshooting sections.

spaces if no other items are added to the message. If you enter more than 160 characters, a second message is created. Your messages are sent as one concatenated message.

spaces if no other items are added to the message. If you enter more than 160 characters, a second message is created. Your messages are sent as one concatenated message.

spaces if no other items are added to the message. If you enter more than 160 characters, a second message is created. Your messages are sent as one concatenated message.

- To repeat the alarm, select **Snooze**.

To turn off the alarm

- When the alarm sounds, press any key, then select **Turn off**.

## Calendar

- You can synchronise your calendar with a computer calendar, with a calendar on the Web or with a Microsoft® Exchange Server (Microsoft® Outlook®).

## Appointments

You can add new appointments or reuse existing appointments.

To add an appointment

- Select **Menu** > **Organiser** > **Calendar**.
- Select a date.
- Scroll to **New entry** and select **Add**.
- Enter the information and confirm each entry.
- Select **Save**.

To set when reminders should sound

- Select **Menu** > **Organiser** > **Calendar**.
- Select a date.
- Select **Options** > **Advanced** > **Reminders**.
- Select an option.

- A reminders option set in calendar affects a reminders option set in tasks.

Feature guides which contain detailed installation instructions and troubleshooting sections.

spaces if no other items are added to the message. If you enter more than 160 characters, a second message is created. Your messages are sent as one concatenated message.

spaces if no other items are added to the message. If you enter more than 160 characters, a second message is created. Your messages are sent as one concatenated message.

spaces if no other items are added to the message. If you enter more than 160 characters, a second message is created. Your messages are sent as one concatenated message.

The Liquid Identity logo, PlayNow and Yari™ phone are trademarks or registered trademarks of Sony Ericsson Mobile Communications AB. Sony is a trademark or registered trademark of Sony Corporation. Media Go is a trademark or registered trademark of Sony Media Software and Services. microSD is a trademark or a registered trademark of SanDisk Corporation. Ericsson is a trademark or registered trademark of Telefonaktiebolaget LM Ericsson. Adobe Photoshop Album Starter Edition is a trademark or registered trademark of Adobe Systems Incorporated in the United States and/or other countries. Mac is a trademark of Apple Inc., registered in the U.S. and other countries. Microsoft, Windows, Outlook, Windows Vista, Windows Server and ActiveSync are registered trademarks or trademarks of Microsoft Corporation in the United States and/or other countries. This product is protected by certain intellectual property rights of Microsoft. Use or distribution of such technology outside of this product is prohibited without a license from Microsoft. Other product and company names mentioned herein may be the trademarks of their respective owners. Any rights not expressly granted herein are reserved. All illustrations are for illustration only and may not accurately depict the actual phone.

Microsoft, Windows, Outlook, Windows Vista, Windows Server and ActiveSync are registered trademarks or trademarks of Microsoft Corporation in the United States and/or other countries.

This product is protected by certain intellectual property rights of Microsoft. Use or distribution of such technology outside of this product is prohibited without a license from Microsoft.

Other product and company names mentioned herein may be the trademarks of their respective owners.

Any rights not expressly granted herein are reserved. All illustrations are for illustration only and may not accurately depict the actual phone.

Feature guides which contain detailed installation instructions and troubleshooting sections.

spaces if no other items are added to the message. If you enter more than 160 characters, a second message is created. Your messages are sent as one concatenated message.

spaces if no other items are added to the message. If you enter more than 160 characters, a second message is created. Your messages are sent as one concatenated message.

spaces if no other items are added to the message. If you enter more than 160 characters, a second message is created. Your messages are sent as one concatenated message.

Feature guides which contain detailed installation instructions and troubleshooting sections.

## Sending content to another phone

You can send content, for example, in messages or using Bluetooth wireless technology.

To send content

- Scroll to an item and select **Options** > **Send**.
- Select a transfer method.

- Make sure the receiving device supports the transfer method you select.

## Using a USB cable

You can connect your phone to a computer with a USB cable. If you are using a PC, you are asked to install PC Companion the first time you connect.

- You may have to purchase a USB cable separately.
- Only use a USB cable supported by your phone.

## PC Companion

PC Companion lets you:

- Explore content in your phone.
- Use your phone as a modem.
- Install PC Software used to synchronise, transfer and back up phone content.

For more information, go to [www.sonyericsson.com/support](http://www.sonyericsson.com/support) to read Feature guides.

- To download Mac compatible software, go to [www.sonyericsson.com/support](http://www.sonyericsson.com/support).

To install PC Companion

- Connect your phone to a PC using a USB cable supported by your phone.

Feature guides which contain detailed installation instructions and troubleshooting sections.

spaces if no other items are added to the message. If you enter more than 160 characters, a second message is created. Your messages are sent as one concatenated message.

spaces if no other items are added to the message. If you enter more than 160 characters, a second message is created. Your messages are sent as one concatenated message.


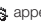
spaces if no other items are added to the message. If you enter more than 160 characters, a second message is created. Your messages are sent as one concatenated message.

## Ringtones

To set a ringtone

- Select **Menu** > **Settings** > **Sounds & alerts** > **Ringtones**.
- Find and select a ringtone.

To turn off the ringtone

- Press and hold down  .  appears.
- The alarm signal is not affected.

## PIN codes

### SIM protection

This lock only protects your subscription. Your phone will work with a new SIM card. If the lock is on, you have to enter a PIN (Personal Identity Number).

If you enter your PIN incorrectly three times in a row, the SIM card is blocked and you need to enter your PUK (Personal Unblocking Key). Your PIN and PUK are supplied by your network operator.

To unblock the SIM card

- When **PIN blocked** appears, enter your PUK and select **OK**.
- Enter a new four-to-eight-digit PIN and select **OK**.
- Re-enter the new PIN and select **OK**.

To edit the PIN

- Select **Menu** > **Settings** > **General** > **PIN codes** > **SIM protection** > **Change PIN**.
- Enter your PIN and select **OK**.
- Enter a new four-to-eight-digit PIN and select **OK**.

Feature guides which contain detailed installation instructions and troubleshooting sections.

spaces if no other items are added to the message. If you enter more than 160 characters, a second message is created. Your messages are sent as one concatenated message.

spaces if no other items are added to the message. If you enter more than 160 characters, a second message is created. Your messages are sent as one concatenated message.

spaces if no other items are added to the message. If you enter more than 160 characters, a second message is created. Your messages are sent as one concatenated message.

spaces if no other items are added to the message. If you enter more than 160 characters, a second message is created. Your messages are sent as one concatenated message.

spaces if no other items are added to the message. If you enter more than 160 characters, a second message is created. Your messages are sent as one concatenated message.

spaces if no other items are added to the message. If you enter more than 160 characters, a second message is created. Your messages are sent as one concatenated message.

spaces if no other items are added to the message. If you enter more than 160 characters, a second message is created. Your messages are sent as one concatenated message.

spaces if no other items are added to the message. If you enter more than 160 characters, a second message is created. Your messages are sent as one concatenated message.

spaces if no other items are added to the message. If you enter more than 160 characters, a second message is created. Your messages are sent as one concatenated message.

spaces if no other items are added to the message. If you enter more than 160 characters, a second message is created. Your messages are sent as one concatenated message.

spaces if no other items are added to the message. If you enter more than 160 characters, a second message is created. Your messages are sent as one concatenated message.

spaces if no other items are added to the message. If you enter more than 160 characters, a second message is created. Your messages are sent as one concatenated message.

spaces if no other items are added to the message. If you enter more than 160 characters, a second message is created. Your messages are sent as one concatenated message.

spaces if no other items are added to the message. If you enter more than 160 characters, a second message is created. Your messages are sent as one concatenated message.

spaces if no other items are added to the message. If you enter more than 160 characters, a second message is created. Your messages are sent as one concatenated message.

spaces if no other items are added to the message. If you enter more than 160 characters, a second message is created. Your messages are sent as one concatenated message.

Feature guides which contain detailed installation instructions and troubleshooting sections.

## 2 Computer:

Follow the instructions.

To disconnect the USB cable safely

- Do not disconnect the USB cable when transferring content as this may corrupt the content.

- Computer:** Right-click the Safely Remove Hardware icon in Microsoft® Windows® Explorer.
- Select the drives you want to disconnect. Select **Stop**.
- Wait until you are notified that it is safe to remove the drive. Disconnect the USB cable.

## Required operating systems

You need one of these operating systems to use Sony Ericsson PC software:

- Microsoft® Windows Vista™
- Microsoft® Windows® XP, Service Pack 2 or higher

## Drag and drop content

You can drag and drop content between your phone, a memory card and a computer in Microsoft Windows Explorer.

To drag and drop content

- Connect your phone to a computer using a USB cable.
- Computer:** Wait until the phone memory and memory card appear as external disks in Microsoft® Windows® Explorer.
- Drag and drop selected files between the phone and the computer.

Feature guides which contain detailed installation instructions and troubleshooting sections.

spaces if no other items are added to the message. If you enter more than 160 characters, a second message is created. Your messages are sent as one concatenated message.

spaces if no other items are added to the message. If you enter more than 160 characters, a second message is created. Your messages are sent as one concatenated message.

spaces if no other items are added to the message. If you enter more than 160 characters, a second message is created. Your messages are sent as one concatenated message.

- Re-enter the new PIN and select **OK**.

- If **Codes do not match** appears, you entered the new PIN incorrectly. If **Incorrect PIN** appears, you entered the old PIN incorrectly.

## Troubleshooting

Some problems can be fixed using Update Service. Using Update Service on a regular basis will optimise the phone's performance. See *Updating your phone* on page 28. Some problems will require you to call your network operator.

For more support go to [www.sonyericsson.com/support](http://www.sonyericsson.com/support).

## Common questions